



All lawns are susceptible to fungus diseases from microscopic air or water-borne fungi. These diseases spread via tiny spores that are all around us. While the spores themselves are present in your lawn most of the time, a combination of conditions sets them in motion. When the temperature, moisture, and light conditions hit certain levels, harmful fungal diseases can thrive.

In the summertime, insect pests can be a problem as well. These tiny insects can damage trees, shrubs, and lawns as they gear up for summer. By the time all is said and done, ants, fleas, ticks, mosquitoes and dozens more will have devoured much of your lawn and landscape while also irritating your pets.

Oasis Disease and Insect Control Applications can help remedy the effects of fungi as well as ticks, fleas, ants, pill bugs, mosquitoes and many more. Call us today at 573-446-0858 to set up an appointment.

Be sure to ask about our Disease and Insect Control Discounts!

Keith Patterson

Keith Patterson
Oasis Landscapes & Irrigation



573-446-0858 • MyLawnOasis.com

REFRESHING WATER FEATURES

While hard to explain, there's something uniquely attractive about moving water. Children are drawn to splash about and throw coins in fountains. Tourists flock from all around the world to witness the majesty of Niagara Falls. Being in the presence of moving water simply makes you feel better. Why not bring that same sense of well-being to your own backyard?

Water elements such as fountains and rock ponds can introduce this unmistakable ambiance to your landscape and outdoor living areas. Water features can vary greatly in terms of size and prominence. You may want a miniature waterfall to accent a plant bed that could use a little life. On the other hand, you may be looking to redefine your patio area with an ornate fountain as your new centerpiece. Plenty of options exist to match the size and scope of the water feature you're looking for.



LIQUID STYLE

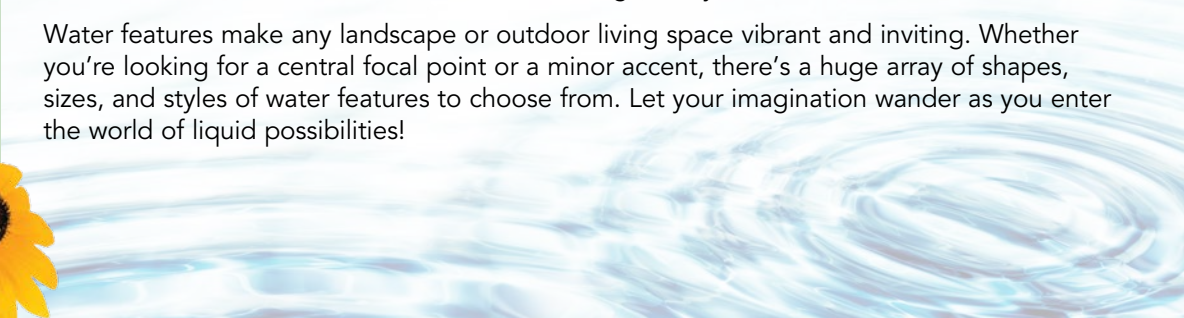
A major factor in planning any new addition is the style and layout of your existing landscaping and hardscaping. If your landscape has a rustic, natural tone, rock pools, waterfalls, or fish ponds add to the wilderness atmosphere. Small ponds can also host a variety of water plants, which in turn invite water-loving wildlife to your aquatic environment.

Other landscapes have a more manicured and organized design, with clean lines and well-defined shapes. For areas such as this, a sculpture-like fountain can add a sense of sophistication and geometry to your garden.

SPARKLE AND SHINE

While moving water creates an amazing visual effect, the impact of a water feature is greatly amplified with landscape lighting. Well-placed lighting can make your entire landscape come to life once the sun goes down, displaying a wide array of shadows and shapes. Lighting for fountains or other features creates the shimmering beauty of water.

Water features make any landscape or outdoor living space vibrant and inviting. Whether you're looking for a central focal point or a minor accent, there's a huge array of shapes, sizes, and styles of water features to choose from. Let your imagination wander as you enter the world of liquid possibilities!



DEADHEADING FOR BLOOMS

Pruning is an important part of tree and shrub care. "Deadheading" is a type of pruning for your flowers that can extend their flowering season. By removing dead or dying blooms, you can trick your flowers into producing more blooms.

When blooms begin to fade, plants go into seed-production mode. While this is a necessary part of the plant life cycle, it's not the spectacular floral display that you want. By removing wilting or dead blooms, you're telling the plant that it needs more of them, which results in new bursts of floral growth. If this seems unnatural, don't worry. The seeds will eventually be produced no matter what; you're just prolonging the display.



While some flowers look best when deadheaded with hand clippers, much of the time you can simply pinch the old blooms off with your hand. Petunias, begonias, and marigolds are just a few popular flowers that benefit from regular deadheading. While very beneficial, this process isn't very intensive or time-consuming. While you're watering or weeding, just yank off a few wilted buds here and there and keep your blooms going strong into the summer!

REPAIRING SUMMER LAWN STRESS

Have you ever noticed how easy it is to spend blazing summer afternoons inside, in the air conditioning? Even those who truly love the summer have trouble enjoying the midday heat of the dog days. Hot, dry weather is no picnic for your lawn, either.

While lawns that consist of warm-season turf such as zoysia or Bermuda grass are suited for very hot weather, cool-season grasses, which populate most lawns, are not. These grasses start out strong in the spring and love the mild weather of fall, but the summer can be a challenge.

As summer sets in, your lawn may go brown in certain areas that receive direct sunlight. Another sign of drought damage is lingering footprints in turf areas that experience foot traffic. Stressed lawns are also more likely to succumb to a variety of fungal lawn diseases. In extreme cases of prolonged drought, lawns can die out entirely.

REMEDIES FOR WORN-OUT LAWNS

While a stressed lawn may look unhealthy and unappealing, the good news is that it's very normal. When faced with hostile weather, a lawn's natural defense mechanism is to go into dormancy. Its growth slows, and it pulls moisture into its roots to conserve as much as possible. When turf's outward appearance is brown and brittle, it means that it's protecting itself.

To bring dormant turf back to life requires consistent and comprehensive watering. Soaking periods of irrigation deliver water to the turf roots and will awaken your lawn from its slumber. The transition in and out of dormancy can be taxing, so be sure to have an irrigation plan in place before you revive your lawn.

Mowing your lawn too short exposes the soil to an increased amount of sunlight (and heat). In the summer, setting your mower blades higher helps protect your lawn from heat stress. Limiting foot traffic on problem areas is another way to prevent damage to distressed lawns. Finally, a professional fertilization schedule helps build a lawn that's resistant to the challenges of summer.

While the hottest months can be trying times for your lawn, the stresses of summer are temporary and can be reduced with a little TLC.



RENOVATE AND ELEVATE YOUR PLANT BEDS

Homeowners who love their landscapes typically hit the ground running in the spring. Plant beds get plenty of attention, from new plantings to edging and mulching. While they look great at the time, months of increasing temperature and extended sunlight can wear down the luster of spring. By mid to late summer, plant beds can use a bit of a face-lift.

In many cases, a mid-season renovation can be as straightforward as a repeat of the springtime routine. Newly edged beds and a fresh layer of mulch have a dramatic visual effect on your entire property. In other cases, annual plants may have declined over the past months and could be removed and replaced with late-season annuals.

Sometimes, you may find that your plant bed could use more of an overhaul than an update. Over time, plants outgrow their allotted space and may no longer look right. In other cases, you may have new ideas on how to use the space or just be looking for a change of pace. Whatever the scope of your upgrade, this is a great time of year to give your plant beds a needed makeover and consider potential renovation.

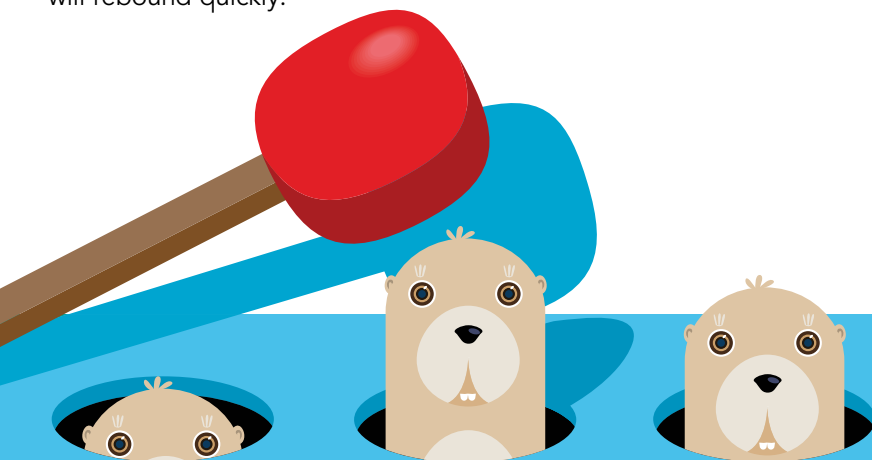


WHACK-A-MOLE

If you've ever had a series of volcano-looking mounds pop up in your yard out of nowhere, you might have a mole problem. Moles are interesting creatures who "swim" through dirt and can smell in stereo. These abilities allow them to easily navigate under your lawn as they hunt down juicy bugs to feast on. Unfortunately, they tear up your turf in the process.

Although a mole presence results in lawn damage, they don't feed on turf roots. Moles are only looking for insects. While they love to eat grubs, they also eat worms and other insects. Molehills do not necessarily mean that you also have a grub problem.

There are several ways to combat moles. Different versions of mechanical traps and toxic bait can be very effective. Families with children may opt for safer, non-toxic repellents or folk remedies such as vegetables covered in roof tar. Whatever the case, the only way to get rid of a mole is by killing it or making your lawn a less appealing place in hopes that it will leave. The good news is moles are primarily solitary animals. Although damage may be extensive, it's most likely due to a single mole. Get rid of him, and your lawn will rebound quickly.



APHIDS, ANTS AND SCALE: THE TRIO OF TROUBLE

Ornamental plants, including trees and shrubs, produce a good deal of food to sustain themselves. Unfortunately, this rich, sweet sap is an attractive meal for insects. Aphids, ants, and scale are three insects that seek to freeloader off of your plants' sap supply and damage your landscaping in the process.

Aphids are tiny, pear-shaped bugs that feed on tender new plant growth. Their ability to reproduce without mating allows their numbers to increase dramatically in a short period of time. Scales are sapsuckers that become permanently attached to the part of the plant they're feeding on.

Both of these tiny bugs leave behind a waste product called honeydew, which in turn can lead to a damaging mold. This residue is also sought after by ants due to its sugar content. This is where it gets kind of strange. Ants will defend aphids and scale in order to harvest their honeydew. They will even transport aphids to and from plants as well as care for their eggs. Ants treat aphids as their own tiny livestock!

While these insects rarely destroy entire plants, they do inhibit their growth. There are professional treatments available to deal with aphids and scales. However, aphid and scale damage can be reduced with sprays of water and soap. With a little vigilance and prompt action, the damage caused by these tiny invaders can be kept to a minimum.



Refer-A-Friend

You Will Receive a

\$25

Account Credit

Your Friend Will Receive

\$25

Off Their Next Service

3 Easy Ways to Refer and Earn!

- 1) Call us at 573-446-0858
- 2) Go to MyLawnOasis.com/contact-us
- 3) E-mail us at Office@MyLawnOasis.com



Keeping Your Grass Greener
Since 1989

- Lawn Fertilization & Weed Control
- Tree/Shrub Fertilization
- Sod Installation
- Lawn Mowing
- Tree/Shrub Pruning
- Low-Voltage Lighting Experts
- **RAIN-BIRD** Sprinkler Systems
- **RAIN-BIRD** Lifetime Warranties
- Natural Stone Walls & Patios
- Surface Water Drainage Solutions
- Mulch Delivery
- Pavers – Patios & Walkways
- Mole Trapping
- Backflow Preventer Testing
- Lawn/Leaf Cleanup

We'll Beat Any Competitor's Prices!

573-446-0858 • MyLawnOasis.com

Got Bugs? We Have Answers!

Take **5% OFF** Lawn and Landscape Treatments
Mosquitoes, Fleas, Ticks, Japanese Beetles and dozens more!
Must present coupon when signing up for service. Not valid with other offers. Expires 8/15/21.

Got Fungus? We Have Answers!

Take **5% OFF** Lawn, Shrub and Tree Applications
Must present coupon when signing up for service. Not valid with other offers. Expires 8/15/21.

Any Service Over \$950
\$100 OFF

Must present coupon when signing up for service. Not valid with other offers. Expires 8/15/21.

Irrigation System Installation
SAVE 10% OFF **RAIN-BIRD**

Must present coupon when signing up for service. Not valid with other offers. Expires 8/15/21.

COUPONS VALID FOR NEW CLIENTS ONLY